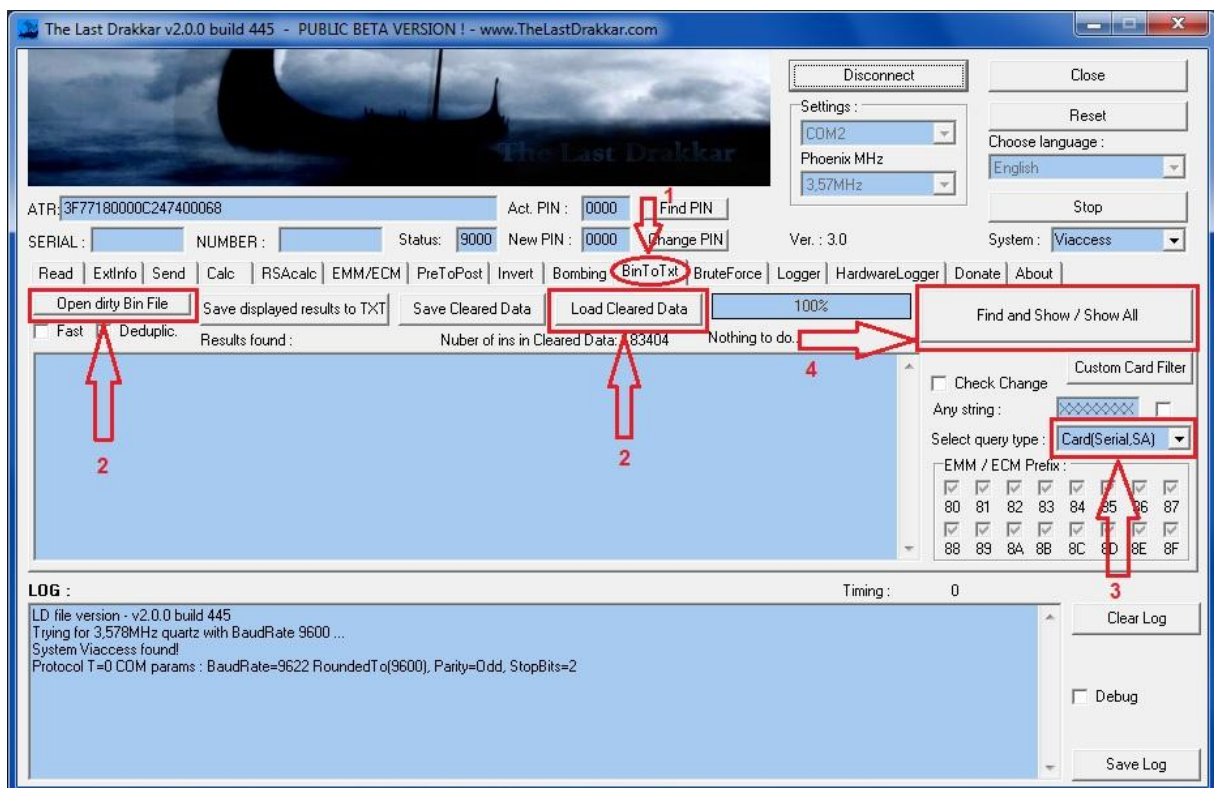


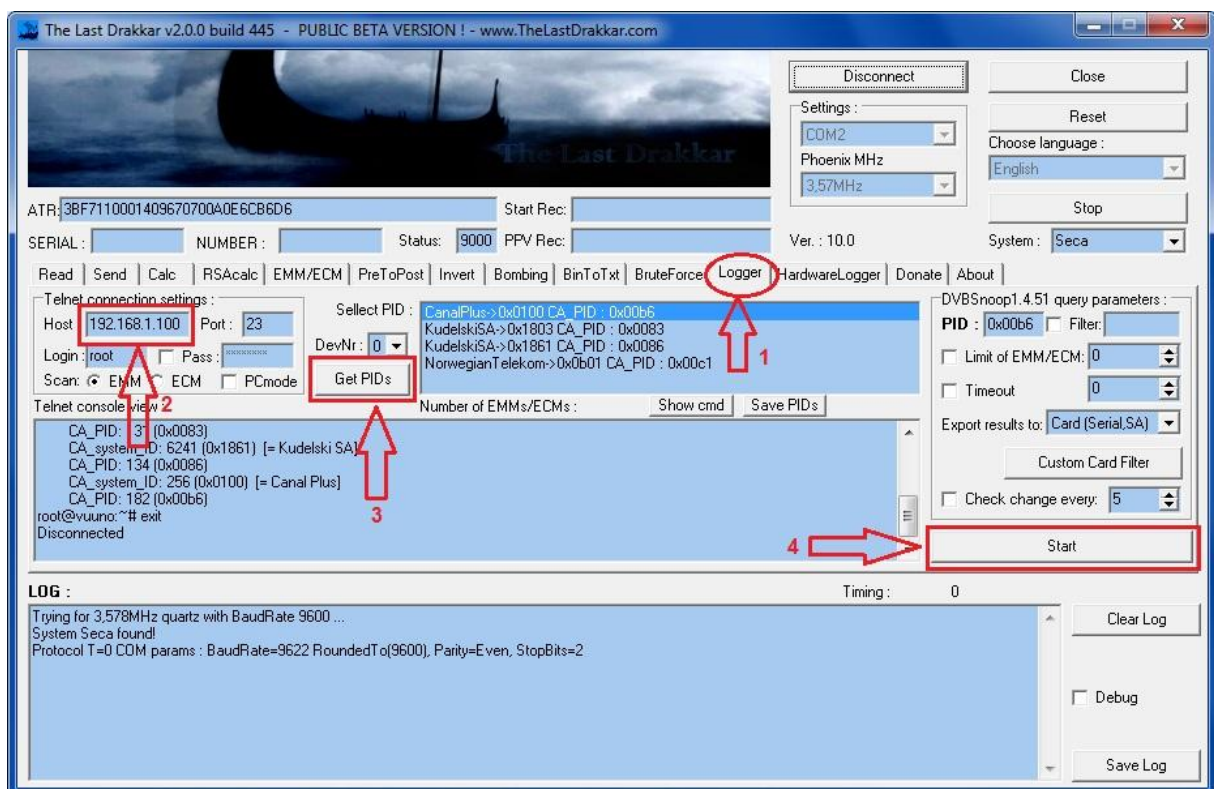
# How to Update smart cards Viaccess, Conax, Irdeto, Seca, Nagra, CryptoWorks etc by The Last Drakkar

There are two very simple ways to update permissions on your card:

1. First way to send permissions to the card is by the file:
  - run the program
  - click **"Connect"**
  - go to the **"BinToTxt" (1)**
  - click **"Open dirty Bin File" (2)** or **"Load Cleared Data" (2)**, according to the form in which we have written **EMM'y** and select the file, program will inform you - correct file is loaded
  - in the **"Select query type" (3)** select **'Card (Serial,SA)'**
  - click **"Find and Show / Show All" (4)**



2. Second way to send permissions to the card is by the logger:
  - run the program
  - click **"Connect"**
  - go to the **"Logger" (1)**
  - in the **"Telnet Connection Settings"** enter the relevant data, in the **"Host" (2)** enter the **IP** of our receiver, the rest of the settings change if we have custom
  - click **"Get PIDs" (3)** and select the **PID** to which the provider sends permissions to our card
  - in the **"Export results to"** select **'Card (Serial,SA)'**
  - click **"Start" (4)**



In both cases, the program will automatically read the card Serial and PPUA/CHID and will send the appropriate EMM's

The **"Custom Card Filter"** option is to read filters (serial / PPUA / CHID) from the card and to manually add your own filters

The **"Check Change"** is used to check what has changed on the card after sending the instructions

-In the **"BinToTxt"** program checks after every instruction

-In the **"Logger"** program checks after user choose how much instruction

***This description is intended to assist subscribers in cases where the receiver does not pass our rights to receive subscriber card***