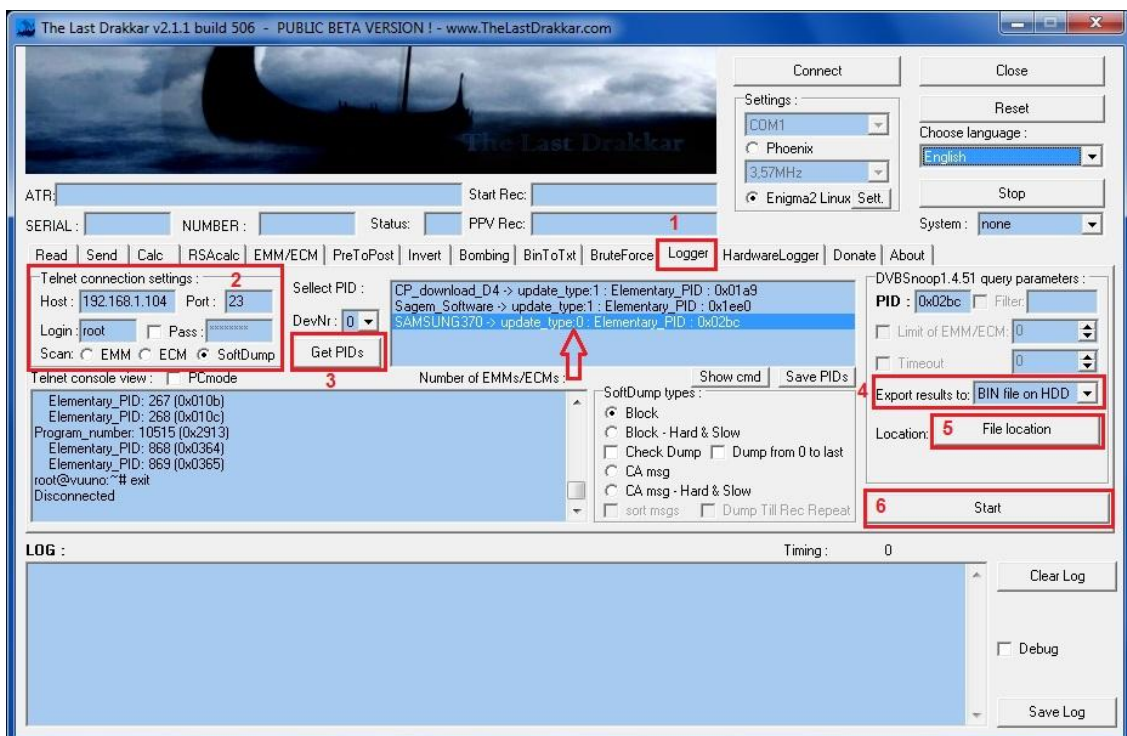


Logging update our receivers by The Last Drakkar tool

This description is intended to capture a software update, which is sent in stream by the provider, that is public data

1. Run the program and go to the "**Logger**" tab
2. In the "**Telnet connection settings**" table:
 - In the '**Host**' enter '**IP**' our receiver
 - In the '**Port**' enter the port that will connect to, default is '**23**'
 - In the '**Login**' enter login we use to connect to the receiver, default is '**root**'
 - In the '**Pass**' type the password, of course, if we gave them and mark
 - In the '**Scan**' select '**SoftDump**'
3. Click "**Get PIDs**", and after scan will show us the PIDs and the names of receivers/ID software, or you will only see PIDs, we choose what we are interested in by clicking on the name in
4. In the "**Export results to**" we must remember that we can only save in the **.bin** or **.txt** file to the hard disk of our PC
5. Also you must show where to save the file by clicking the "**File Location**"
6. Click "**Start**"



Brief description of the " SoftDump types" :

- **SoftDump** - logging software
- **SoftDump types** - how is sended software
- **Block** - This feature log software that is sent in the form of blocks of data
- **Block - Hard & Slow** - software in the form of blocks of data captured at a lower level (transport stream) when the data on normal levels are not available, it takes more time
- **Check Dump** - This function checks if the file is captured all, if not, the Drakkar logg missing data blocks and connects with other logged blocks to correct whole
- **Dump from 0 to last** - This function works when we try to logg after it's started sended, then the tool will wait and start from zero to end
- **CA msg** - the update is sent in the form of data, similar to the emm/ecm conditional access in the same stream
- **CA msg - Hard & Slow** - the same function as the Block, capturing at a lower level
- **sort msg** - this put together captured data in order from 0 to F (HEX)
- **Dump Till Rec Repeat** - the program will logg until the data log will not be repeated

We have to remember to switch the receiver on our channel/transponder where the operator sends an update, if you do not know can search manually but it's fun, it will take us a while

The program scans the sometimes few moments PIDs because he scan precisely

If in the option "CA msg" we don't mark "sort msg" or "Dump Till Rec Repeat" program will be so long logg until we hit the "Stop"

The logging software has been added for educational purposes , the program The Last Drakkar does not change in any way logged data

Downloading or modifying the captured software at your own risk